

SUNSTAR®

{ 2010 }



SUNSTAR

Exteriors

Be stylish with standard graphics, or upgrade to the deluxe graphics package or full-body paint for even more distinction on the road.

(STANDARD GRAPHICS)



Gold
(DELUXE GRAPHICS)



Bright Platinum
(DELUXE GRAPHICS)



Steel Gray
(FULL-BODY PAINT)



Vintage Red
(FULL-BODY PAINT)

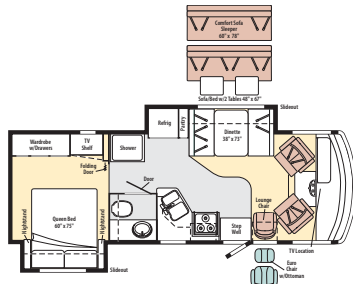
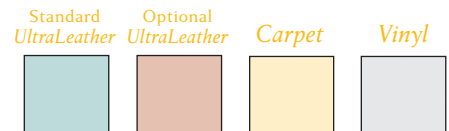


Catalina Blue
(FULL-BODY PAINT)

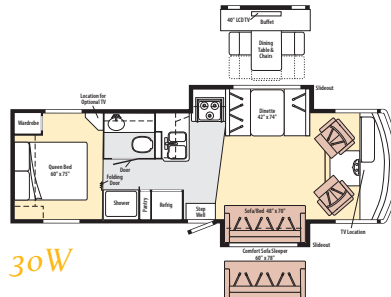


Floorplans

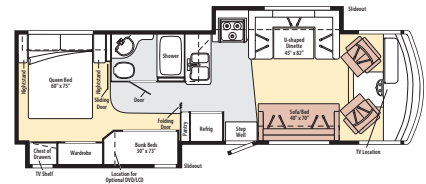
Dimensions shown are for sleeping space only and may vary due to styling differences. Dashed lines denote overhead storage areas. Floorplans and specifications are also available online at Goltasca.com.



26P



30W



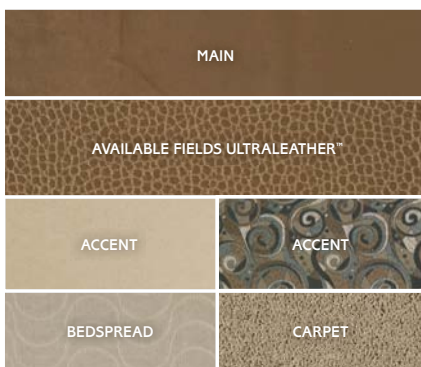
32K

Interior Décor

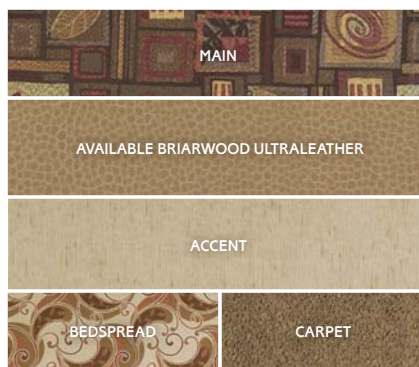
Three fabric collections give you a choice of interiors. The cabinetry comes in three wood finishes with satin nickel hardware. Choose UltraLeather™ for a soft leather feel that is extra durable and easy to clean.



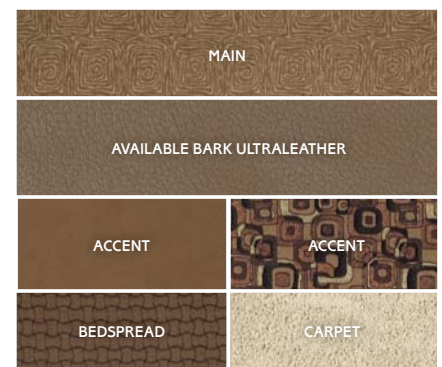
Cloudburst



Warm Glow



Cobblestone





The only manufacturer to have received the RVDA Quality Circle Award for exceptional products, service and support for 13 consecutive years

ON THE COVER: 32K Steel Gray Full-Body Paint

32K Cobblestone with Coffee-Glazed Sierra Maple



 SMARTSPACE

Amenities

- 32" LCD TV
- Satellite system ready
- Full-extension drawer slides
- Available UltraLeather
- 40" LCD TV with dining table and buffet (available 30W)

Things Are Looking Brighter

The Sunstar® makes Class A living an easy choice with new styling, SmartSpace™ design, three distinct floorplans and a variety of options at a comfortable price. A Ford chassis is standard and a Workhorse™ chassis with an Allison® transmission is available on the 32K.

Every floorplan features a 32" LCD TV. A 40" LCD TV with dining table and buffet is available in the 30W. The sofa and dinette offer comfortable seating by day and quickly convert into beds at night. A spacious bedroom in the back provides privacy and an abundance of storage with underbed access (26P and 32K). You can also add tinted, dual-glazed windows to increase thermal efficiency throughout the coach.

The kitchen makes you feel at home with residential features such as a microwave oven or an available microwave/convection oven, large pantry, refrigerator/freezer, three-burner range top, vented range hood and an available oven. Enjoy home cooking in your new home: the 2010 Itasca Sunstar.





This is What Travel is All About

You'll love going places in your new user-friendly Sunstar, thanks to convenient color-coded labels in the service center and Smart Storage™ compartments. Available automatic leveling jacks make it easy to get settled at the campground while two deep-reserve, Group 24 batteries provide plenty of power when dry camping. With the standard winterization package, winter storage is painless, too. We even made driving easier by adding a one-piece windshield and available sideview cameras.

Exterior Highlights

- Available awning
- Available full-body paint
- Two ceiling-ducted high-efficiency roof-mount air conditioners (32K)
- PowerLine® energy management system (32K)
- Durable fiberglass roof

Bunk Beds The 32K includes rear bunk beds with storage shelves and available DVD players with 8.5" LCD monitors and headphones. A large bedroom wardrobe provides plenty of extra storage.



Weights & Measures

| | 26P | 30W | 32K |
|--------------------------------------------------------|---------------------|------------------------------------------|---------------------------------------------------------------|
| Length | 26'11" | 30'11" | 33' |
| Exterior Height ¹ | 12'4" | 12'4" | 12'4" |
| Exterior Width ² | 8'5" | 8'5" | 8'5" |
| Exterior Storage ³ (cu. ft.) | 49.8 | 89.9 | 88.6 |
| Awning Length | 11'6" | 17' | 13' |
| Interior Height | 6'8" | 6'8" | 6'8" |
| Interior Width | 8' | 8' | 8' |
| Freshwater Capacity w/Heater ⁴ (gal.) | 64 | 72 | 75 |
| Holding Tank Capacity - Black/Gray ⁴ (gal.) | 43/38 | 37/42 | 44/46 |
| LP Capacity ⁵ (gal.) | 18 | 18 | 18 |
| Fuel Capacity (gal.) | 75 ^A | 75 ^A /40 ^C | 75 ^A /75 ^B /40 ^C |
| GCWR ⁶ (lbs.) | 26,000 ^A | 26,000 ^A /26,000 ^C | 26,000 ^{A,B,C} |
| GVWR (lbs.) | 16,000 ^A | 18,000 ^A /20,500 ^C | 22,000 ^A /22,000 ^B /20,500 ^C |
| GAWR - Front (lbs.) | 6,500 ^A | 7,000 ^A /7,500 ^C | 7,500 ^{A,B,C} |
| GAWR - Rear (lbs.) | 11,000 ^A | 12,000 ^A /13,500 ^C | 15,000 ^A /14,500 ^B /13,500 ^C |
| Wheelbase | 158" | 190" | 208" |

^A Ford® F53 Chassis ^B Workhorse W22 Chassis ^C Workhorse W20 Diesel Chassis

Discover More on the Web

Want to see more of the Itasca Sunstar? You'll find more pictures, in-depth info, floorplans and complete specs at Goltasca.com. You'll also see videos and highlights of key features, such as:

 SMARTSPACE™

TRUEREVE™

 SMART STORAGE™

SUPER
STRUCTURE™

POWERLINE®

ONEPLACE™



THE MOST RECOGNIZED
NAME IN MOTOR HOMES™

Goltasca.com

NYSE: WGO



Join the Itasca Family

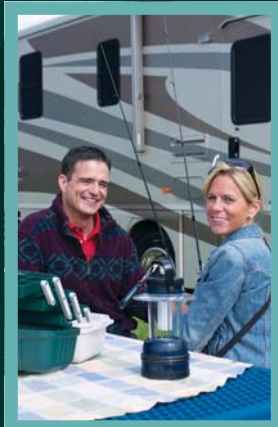
Itasca owners simply have more fun. When you buy a Sunstar, you can become a part of the Winnebago-Itasca Travelers Club. As a member, you'll meet other motor home enthusiasts, travel to interesting places with interesting people, and be the first to learn about new Itasca products. See what the WIT Club is all about at WITclub.com.

- Join the WIT Club
- Caravans and rallies
- Local and state activities
- RV travel and benefits

For Sales and Service Information Contact:



Seat belts are your most important hookup. Always buckle up.



©2009 Winnebago Industries, Inc.
Printed in USA