

NEW WEIGHT LABEL (CARGO CARRYING CAPACITY)

In addition to the standard certification label, Winnebago Industries is implementing the new federal "MOTORHOME OCCUPANT AND CARGO CARRYING CAPACITY" label (See Figure 1). The new label provides the motor home's occupant and cargo carrying capacity (OCCC) along with the number of seat belt positions in the vehicle (Safety belt equipped seating capacity).

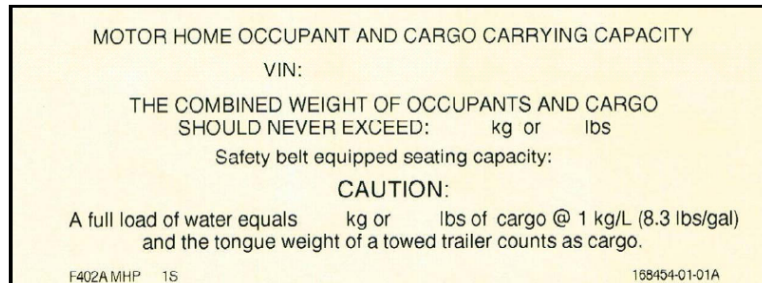


Figure 1

The label also provides the weight of a full load of water (@ 1kg/L or 8.3 lbs/gal) and advises the user that this weight, along with the tongue weight, counts as cargo.

All new motor homes 10,000 lbs GVWR and over will have:

1. A permanent OCCC label (See Figure 1) in the driver's area next to or near the certification label.
2. An identical temporary OCCC label on the forward-most passenger side door.

All new motor homes under 10,000 lbs GVWR, which includes the ERA (B-Van), will have:

1. A "TIRE AND LOADING INFORMATION" label (See Figure 2) on the driver's door jamb.
2. A temporary OCCC label on the forward-most passenger side door.

Note: The temporary OCCC label must not be removed prior to the first retail sale.

If weight exceeding 45.4 kg (100 lbs) is added to any of our new motor homes (or B-Van) between final vehicle certification and first retail sale, the occupant and cargo capacity (OCCC) must be corrected. This can be done by either correcting the permanent OCCC label or adding a Cargo Carrying Capacity Modification label (see Figure 3).

The Certification Label lists important information about your unit. The Certification Label is permanently attached to the unit in the driver's door area and a copy is included in the InfoCase. See Figure 4 to learn more about the different parts of the Certification label.

Where to find the Certification Label:

1. InfoCase
2. Attached to the unit – the certification label will be permanently attached in one of the following locations:
 - x Front lower portion of the driver's door
 - x Lower portion of the wall next to the driver's seat
 - x Pillar in front of the driver's door

Figure 4

MANUFACTURED BY
WINNEBAGO
 INDUSTRIES
 10/05

INCOMPLETE VEHICLE MANUFACTURED
 BY FORD MOTORS CORP 09/05

GVWR 14,050 LB 6,373 KG

GAWR:		SUITABLE TIRE AND RIM CHOICE		COLD INFLATION PRESSURE	
TIRE	RIM	TIRE	RIM	TIRE	RIM
FRT 4,600 LB 2,087 KG	LT22575R16E	16.OX6.00	65 PSI 448 KPA	SING	
RR 9,450 LB 4,287 KG	LT22575R16E	16.OX6.00	80 PSI 552 KPA	DUAL	

THIS VEHICLE CONFORMS TO ALL APPLICABLE FEDERAL MOTOR VEHICLE SAFETY STANDARDS IN EFFECT ON THE DATE OF MANUFACTURE SHOWN ABOVE.

SERIAL NO. 703BOH247309 VIN 1FDXE45886HA92580

TYPE NPV MODEL 2007 SPIRIT IF331H COLOR U33

Legend:
 S = 1995
 T = 1996
 V = 1997
 W = 1998
 X = 1999
 Y = 2000
 1 = 2001
 2 = 2002
 3 = 2003
 4 = 2004
 5 = 2005
 6 = 2006
 7 = 2007
 8 = 2008
 9 = 2009

Callout 1 (Red): This lists the date the vehicle was manufactured by Winnebago Industries, Inc.

Callout 2 (Yellow): Lists the chassis manufacturer and the date the chassis was manufactured

Callout 3 (Green): This is the chassis Vehicle Identification Number (VIN) of your vehicle. The 10th character signifies the model year of the chassis.

Callout 4 (Purple): This is the serial number assigned to your vehicle by Winnebago Industries, Inc. The 6th character signifies the model year of your unit.

Callout 5 (Blue): Lists the Winnebago Industries, Inc. product model of your vehicle

Callout 6 (Purple): Specifies the interior base color of the vehicle